



Movinor[®] N AC Servomotors

Features

Ultra compact size

High torque

Low inertia

Protection IP-65

Power

Stall torque 0.28 to 60 Nm, rated torque 0.25 to 44 Nm

Sizes 55, 64, 70, 86, 98, 142 & 190 mm

Executions

Wide range of standard models

Customized versions

CE and UL certifications

ATEX versions

Movinor[®] N, high-efficiency AC Servomotors

These motors with stators manufactured in pole winding technology are improved versions of the H-series. An optimized mechanical construction and stronger magnets result in an increase of power-density of 15 to 20% compared to the predecessor models, depending on frame size and motor length.

Technical data

Type	Torque	Speed	Winding C (230VAC)			Winding D (400VAC)		Length K ³	
	M _o	n _{nom}	I _o	n _{max} @230VAC	n _{max} @400VAC	I _o	n _{max} @400VAC	without brake	with brake
	[Nm]	[rpm]	[Arms]	[rpm]	[rpm]	[Arms]	[rpm]	[mm]	[mm]
N055-1 ¹	0.28	4 500	0.97	12 000	12 000	0.97	12 000	67	105
N055-2	0.54	4 500	1.17	7 740	12 000	0.93	10 710	82	120
N055-3	0.75	4 500	1.54	7 380	12 000	0.86	7 100	97	135
N055-4	0.95	4 500	1.82	6 950	12 000	1.15	7 560	112	150
N064/070-1 ²	0.75	3 000	1.15	5 520	9 560	0.89	7 400	98	138
N064/070-2 ²	1.30	3 000	1.77	4 910	8 500	0.99	4 780	116	156
N064/070-3 ²	1.75	3 000	2.20	4 610	7 980	1.11	3 980	134	174
N064/070-4 ²	2.20	3 000	2.70	4 420	7 650	1.49	4 250	152	192
N064/070-5 ²	3.00	3 000	3.10	4 420	6 420	1.91	3 980	188	228
N086-1	1.15	3 000	2.00	6 320	10 940	1.10	5 980	82	120
N086-2	2.05	3 000	2.80	4 920	8 520	1.57	4 790	100	138
N086-3	3.50	3 000	4.20	4 390	7 600	2.40	4 260	136	174
N086-4	4.80	3 000	4.80	3 660	6 340	2.80	3 680	172	210
N098-1	5.10	3 000	6.80	4 800	8 300	3.80	4 650	113	154
N098-2	7.50	3 000	8.90	4 300	7 440	5.20	4 350	143	184
N098-3	9.60	3 000	10.70	4 060	7 030	6.00	3 910	173	214
N098-4	11.30	3 000	11.00	3 540	6 130	7.10	3 950	203	244
N142-1	12.00	3 000	14.20	4 310	7 460	8.00	4 170	145	181
N142-2	16.00	3 000	17.30	3 920	6 790	10.10	3 950	175	211
N142-3	20.00	3 000	18.60	3 380	5 850	11.60	3 650	205	241
N142-4	24.00	2 000	22.30	3 380	5 800	14.00	3 650	235	271
N190-1	18.00	3 000	–	–	–	12.20	4 260	158	222
N190-2	24.00	3 000	–	–	–	15.30	4 000	183	247
N190-3	30.00	3 000	–	–	–	17.80	3 720	208	272
N190-4	38.00	3 000	–	–	–	23.00	3 950	233	297
N191-1	30.00	3 000	–	–	–	16.30	3 420	181	245
N191-2	40.00	3 000	–	–	–	26.30	4 130	211	275
N191-3	50.00	2 000	–	–	–	22.70	2 850	241	305
N191-4	60.00	2 000	–	–	–	24.00	2 510	271	335

¹ N055-1: same electrical characteristics of windings for 230 and 400VAC

² N064/070: special range available with a minimal batch of 5 pieces per order

³ Length for motors with resolver and 0° straight or 90° angled connectors towards rear

Standard version

- Resolver feedback
- Shaft without keyway
- Protection IP-65
- Angled connectors 90° towards rear
- PTC sensor
- Windings 230/400VAC (320/560VDC)

Options

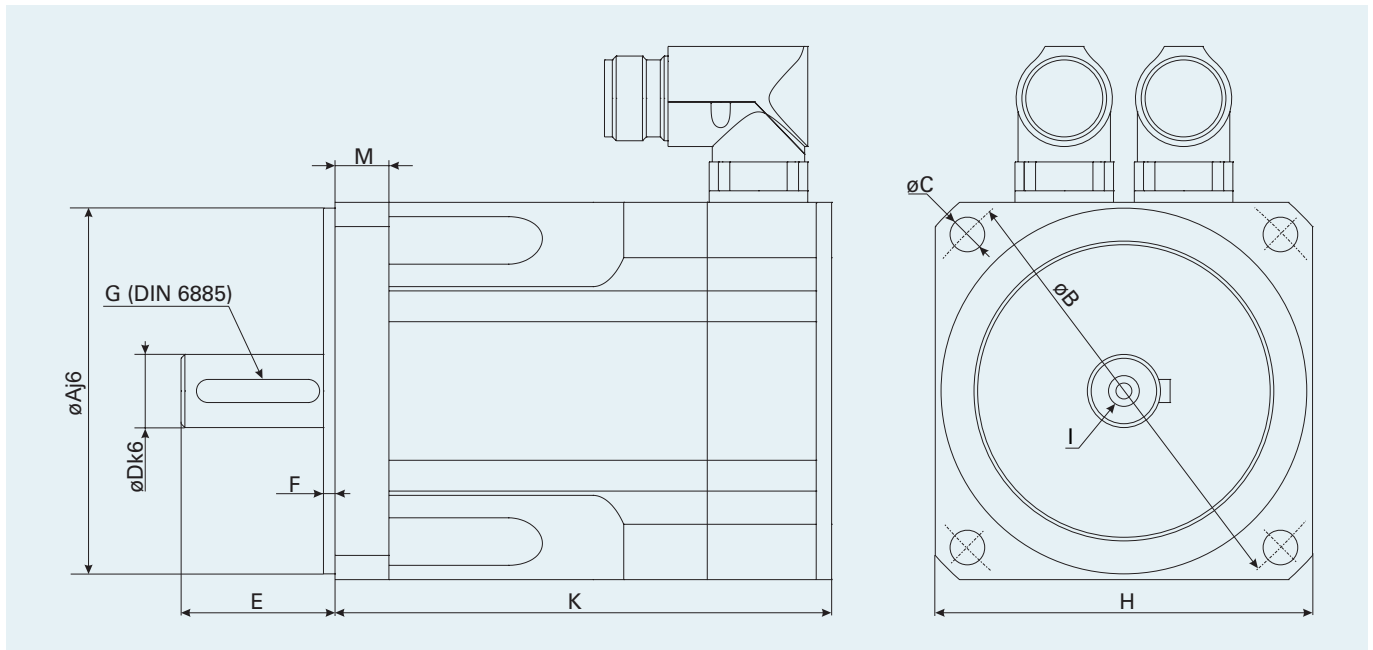
- Incremental encoder, SinCos, Hiperface, EnDat
- Shaft with keyway
- Protection IP-67
- Shaft seal
- Straight, 90° towards front or rotatable connectors
- Direct cable output
- NTC, PT1000 sensors
- ATEX II 3G Ex nA II 155°C and ATEX II 3D Ex tc IIIC 155°C according to EN 60079-0/15/31

Customized versions

- Shafts (i.e. hollow shafts)
- Flanges, housings
- Windings
- Connections
- Execution according to customer's specifications

The superior power density and the excellent accelerating ability make these motors perfectly suited for high-dynamic applications in machines like packaging, handling, assembly, textile and others.

Mechanical dimensions



Dimensions [mm]	$\varnothing A_{j6}$	$\varnothing B$	$\varnothing C$	$\varnothing D_{k6}$	E	F	G	H	I	M
N055	40	63	4x5.8	9	20	2.5	3x3x18	55	M3x7(opt)	6
N064²	50	70	4x5.7	14	30	2.5	5x5x22	64	M4x14	11
N070²	60	75	4x5.7	11	23	2.5	4x4x16	70	M4x14	11
N086	80	100	4x7.0	14	30	3.0	5x5x22	86	M4x10	11
N098	95	115	4x9.0	19	40	3.0	6x6x32	98	M5x14	14
N142	130	165	4x12.0	24	50	3.5	8x7x40	142	M8x20	14
N190	180	215	4x13.0	24	50	3.5	8x7x40	190	M8x19	12
N191	180	215	4x15.0	28	58	4.0	8x7x40	190	M10x22	15

² N064/070: special range available with a minimal batch of 5 pieces per order

Brake

Motor type	N055	N064/070/086	N098	N142	N190	N191
Torque [Nm]	2.0	4.5	9.0	18.0	36.0	36.0
Supply [VDC]	24 (+6% – 10%)					

Infranor product range

Drives

Standard drives



Customized drives



Drive applications



Motors

Standard motors



Customized motors



Motor applications

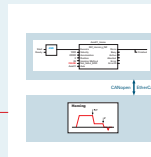


Services

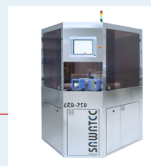
Standard services



User-specific services



Global solutions



Infranor Group

Infranor creates added value for its customers by providing tailor-made motion solutions.

Based on strong working relationships, Infranor offers extensive market know-how, comprehensive engineering skills and a wide range of high-quality products leading to productivity gains and therefore to comparative advantages for its customers in their respective markets.

Infranor worldwide

Switzerland
Germany
France
Italy
UK
Spain
USA
China

Contact

NORDIC SERVO
YOUR PARTNER IN AUTOMATION

Nordic Servo AB
Grustagsvägen 8
S-138 40 Älta, Sweden
Office: +46 8 86 87 80
E-mail: sales@nordicservo.com

Other representations:
Denmark, Poland, Slovenia,
Israel, India.



www.infranor.com